

# InteriCAD™ T5

professional interior design software



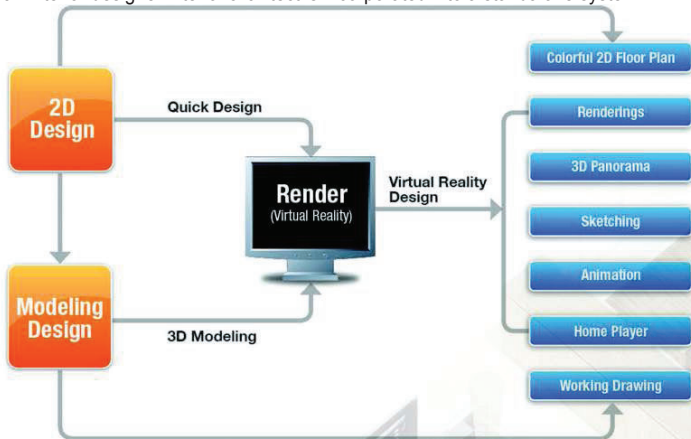
Your Total 3D Interior Design Software Solution



## Introduction

# InteriCAD™ T5

InteriCAD T5 is a professional interior design 3D software package. Within 1 hour you can accomplish: 3D modeling design, photo-realistic renderings, hi-end animation, panoramic presentations and working drawings. Everything you need as an interior designer/interior architect is incorporated into a standalone system.



## FEATURES

1. Easy to learn and use
2. Quick modeling function
3. Professional working drawing system
4. Mass updatable library
5. Handy material / texture / object edit in 3D scene
6. Realistic lighting and rendering
7. Fast rendering engine
8. 12th Generation rendering engine
9. Flexible 3D model formation
10. Various rendering outputs: 3D presentation, panorama, animation dxf file, channel picture, line drawing format.
11. Intelligent 2D to 3D conversion
12. Innovative presentation tools

## Modeling and 2D Design

InteriCad provides a fast and powerful modeling function. It caters for the designers various needs including the creation of ceilings, floors, stairs and working drawings. Using either **2D design** or **Modeling design** Designers can easily convert their designs into Virtual Reality and create **Photo Realistic** images.



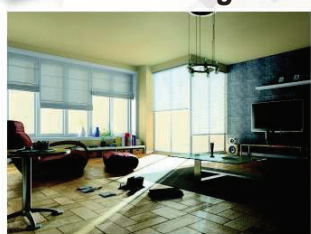
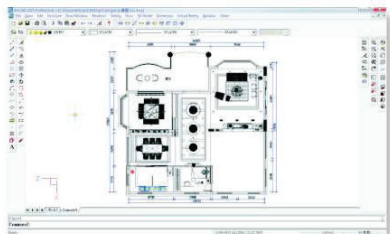
**Modeling Design**

OR

**2D Design**



**Rendering**

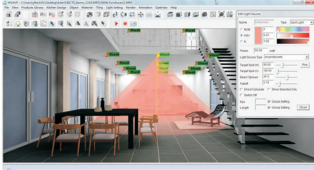


# Rendering

The core technology of InterCAD is its high quality rendering engine, developed by YFCAD International. It provides a what-you-see-is-what-you-get edit mode, which makes editing of lighting, materials and objects quick and easy.

## Powerful Lighting Functions

### Spot Light



### Sunlight



## Massive Model and Texture Library

Comprehensive and Expandable Library with 7000+ models.

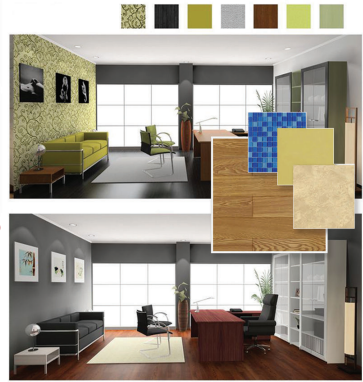


Compatible with **DWG/DXF, 3DS and SKP**



## Drag and Drop Materials

Users can easily adjust and apply their own materials to objects. Special effects include reflection, gloss, matt, transparency ...



## Photon Rendering

The new Photon Rendering Engine produces even better results than the previous engine, taking your presentations to the next level.



## Ceramic Tiling Design Module

The new tiling module allows users to create sophisticated tiling layouts with just a few clicks.



## Network Rendering

Network Rendering allows the rendering process to be distributed between multiple networked computers, decreasing overall rendering time.



# Presentation Options

InterCAD T5 provides various presentation options.

Photo-Realistic Perspectives, Sketch Drawing, Animation, DXF and 3D Images.

## Photo Realistic Rendering



## Sketch Picture



## Animation and 3D Glasses





The Choice of more than 300,000 Designers from over 80 countries.



Visit us for a **software demo** or a **FREE experience training course**

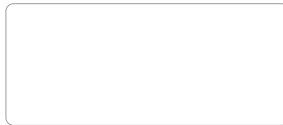


#### Minimum Requirements

CPU: Intel/ AMD Dual Core 2.5 GHz +  
RAM: 2gb  
HHD: 4gb free space  
GFX: 256mb or greater OpenGL capable  
independent graphics card

#### Recommended Requirements

Intel i5/i7 AMD Phenom II x6  
4gb  
4gb free space  
NVIDIA GeForce series recommended  
512mb - 2gb GFX memory



professional interior design software



Search: Furnspace 3D

+27 (0)21 461 7043/46 | info@furnspace.co.za | www.furnspace3d.co.za  
71 Harrington St | Cape Town | South Africa